

GARDEN DESIGN JOURNAL

JANUARY 2011 / ISSUE 102 / £6

NEWS/GARDENS/DESIGNERS/PLANTING/SUSTAINABLE DESIGN/BOOKS/COURSES/EVENTS
THE JOURNAL FOR THE SOCIETY OF GARDEN DESIGNERS

STUD
SHOW
LAYING
FEATURE

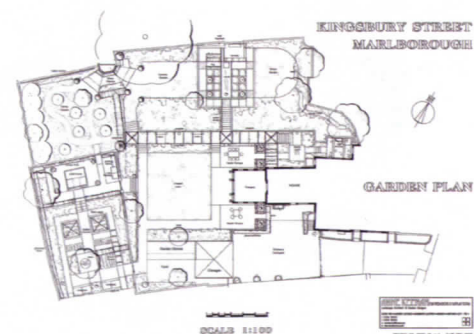
REVIEW OF THE YEAR

STYLE, INNOVATION & SUSTAINABLE SOLUTIONS:
A ROUND-UP OF UK DESIGN PROJECTS IN 2010





no level area near the house and listed walls both enclosed and subdivided the site. The design solution was to introduce a significant pergola to visually reduce the impact of the major change of level near the house. The raised pergola sits between two retaining walls running E-W across the garden. The walkway between the walls and the pergola overhead frame views through the garden and provide seating areas overlooking the croquet lawn. The change of level enabled water to be used to maximum effect, with a series of spouts, chutes, rills, water steps, tanks and a canal leading one down the major N-S route. Existing stone, slabs, setts, cobbles, coping and tiles were lifted, stored and re-used to give an immediate established feel. The new hand-made bricks blended well with the listed walls, and a stainless-steel water sculpture adds an unexpected contrast in the upper garden.



Private Garden, Marlborough, Wiltshire

Anne Keenan MA BEd(Hons) DipLA MSGD
www.annekeenan.co.uk

Brief

To create an interesting garden on a steeply sloping site with difficult town-centre access. The clients had enjoyed opening their previous garden for the NGS and they required a variety of routes and interesting features for visitors to discover and enjoy. A small croquet lawn and a canal were requested, as was the recycling of as many existing hard-landscaping materials as possible. The house, summerhouse and garden walls are listed Grade 2.

Design

The half-acre site required a design that linked the house with the garden and played down the significant change in level visible from the house. A town garden that drops over 4m in height near the house, and 6m overall, presents a real challenge. There was

Garden details

Size 2,087m² **Aspect** South-facing **Soil** Alkaline loam on solid chalk **Started** 2006 **Completed** 2009 **Cost** £100K+ **Design fee** 10% **Contractors** Walmsley Shaw www.walmsleyshaw.co.uk; English Garden Carpentry www.egcc.biz; Fairwater fairwater.co.uk; White Cottage whitecottage.co.uk; Zinnia Mulford zinniamulford.com