

GARDEN DESIGN JOURNAL

JANUARY 2012/ISSUE 114/£6

NETWORK
BEST PRACTICE
GLASS DESIGN
FEATURES

Review of the Year

BEST DESIGNS OF 2011



Extensive country garden, near Alresford, Hampshire

DESIGNER: Anne Keenan MSGD
WEBSITE: www.annekeenan.co.uk

BRIEF To design an interesting garden and adjoining landscape for an active family who had commissioned a large new house on an eight-acre site. They requested a design that included a walled kitchen garden, a swimming pool and a tennis court. As the location of the house is on an elevated site, one of the key requirements was to provide a sense of enclosure and places to sit out of the wind, without losing the outstanding extensive views over an unspoilt Hampshire valley.

DESIGN The eight-acre rectangular site is subdivided down its length into domestic curtilage and agricultural land. One of the key aims of the design was to visually unite the two halves, so that the landscape appears to wrap around the house.

To achieve this, part of the domestic curtilage was converted to meadow, while the formal gardens were kept very close to the house. Views across the surrounding countryside were framed using yew hedges, gates and windows in the garden walls. A garden path, which passes through a variety of enclosed character spaces, allows the family to make a circuit of the whole garden.

A long west-east vista visually extending out into the meadow was created to the south of the house, the vista being framed by a pavilion set within a circular rose garden. A semi-circular ha-ha encourages views in all directions and retains a level games lawn, an important addition on a sloping site.

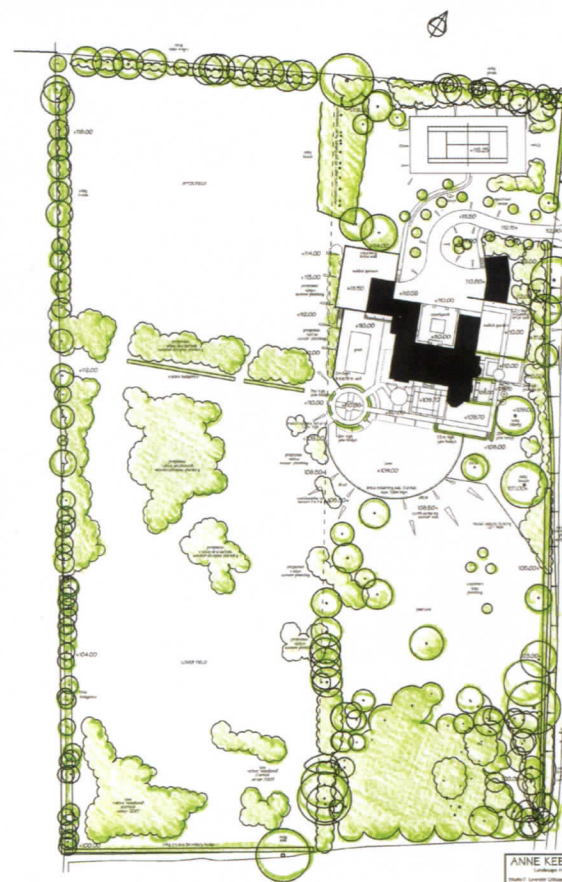
To create privacy and hide the house from the road, a new drive was created by cutting into the hillside. Wildflowers now clothe the steep banks flanking the drive.

GARDEN DETAILS

Size: 34,936 m²
Aspect: South-east facing slope
Soil: Calcareous silty-loam
Date started: January 2007
Date completed: December 2010
Total cost: Over £500K
Design fee: Undisclosed
Building contractor: RW Armstrong & Sons
Landscape contractor: Merry-Matthews Land Services
Rose pavilion: Garden Requisites
Supply of plants: Chichester Trees & Shrubs, Holmes & Sons, Pockocks Roses, Charles Flower Wildflowers



Privacy and formality near the house opens up to naturalistic planting and extensive views. The site is divided vertically into domestic and agricultural land



ANNE KEENAN
 Landscape Architect
 2007-2010
 01253 700000
 01253 700000
 01253 700000